

# 1

## **Installing SDE For Visual Studio .NET**

# Chapter 1 - Installing Smart Development Environment for Visual Studio

Installing SDE-VS (Smart Development Environment for Visual Studio) is an easy task. However, there do have things that you should be aware of. For example, about the relationship between SDE-VS and Visual Paradigm Suite, and how to import a valid license key. This chapter will show you how to get SDE-VS started from downloading to running the application. Here are the covered topics:

- Downloading Visual Paradigm Suite from the Internet
- Installing Visual Paradigm Suite and SDE-VS
- Start the application
- Importing a valid license key

## Downloading Visual Paradigm Suite

There is no separate installer made for SDE-VS. In order to install SDE-VS, you must download and install Visual Paradigm Suite, an application suite that includes all the Visual Paradigm products, and install SDE-VS from the suite. To download Visual Paradigm Suite:

1. Visit Visual Paradigm's official download site at: <http://www.visual-paradigm.com/download/>
2. Click on the image for Visual Paradigm Suite.



Figure 1 - Click to visit the download page of Visual Paradigm Suite

3. Enter your account information, and click **Continue** to proceed.

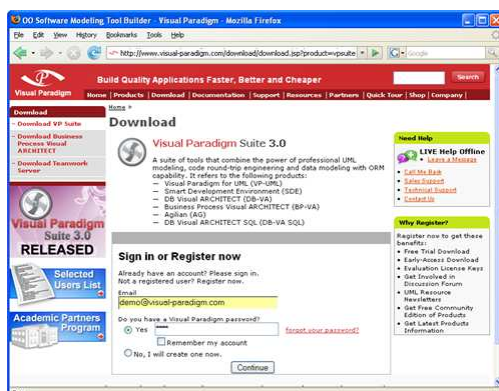


Figure 2 - Login to proceed to download

4. Under the list of **Evaluation Product(s)**, press on the plus sign near **Smart Development Environment** to expand the list of SDEs. Then, select *for Visual Studio*. This option will affect the capability of the evaluation key, which will be sent upon downloading the suite.
5. Choose the way of receiving the evaluation key, or not to receive it. Here are the description of each of the possible ways:

Ways of receiving an evaluation key	Description
Do not send me the evaluation key	Just to download the suite without the need of an evaluation key.
Send via email as attachment	You will receive an email attached with the key file. Make sure your server allows email with attachments for choosing this option.
Send via email as URL	You will receive an email, which includes a download link of the key file.

6. Select your operating system from the **Platform** drop-down menu.
7. From the **Mirror Site** drop-down menu, choose the location that is closest to your current location for a faster download speed.
8. Click **Download** to proceed with downloading the Visual Paradigm Suite.

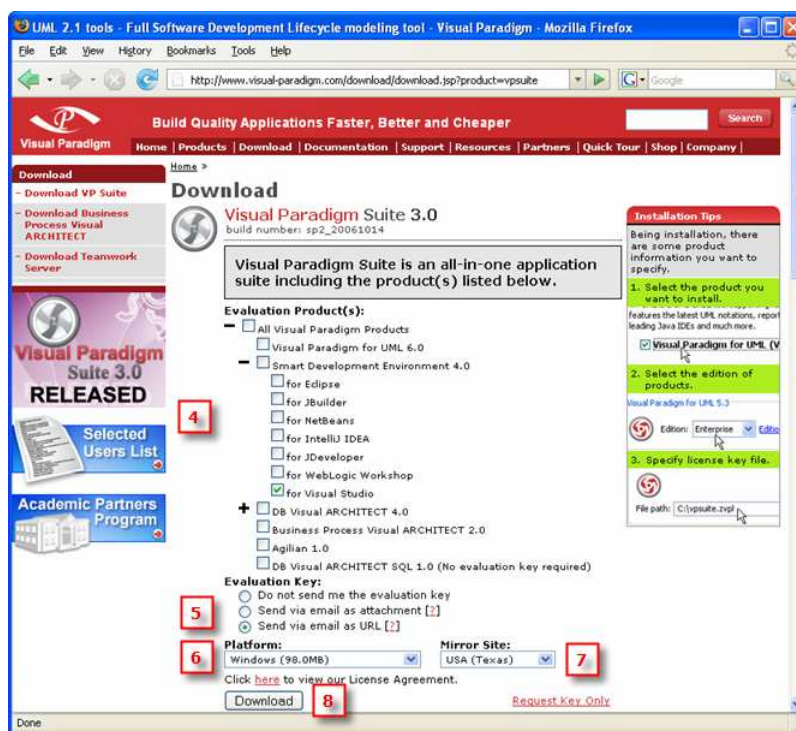


Figure 3 - Visual Paradigm Suite download page

## Installing SDE-VS

The Visual Paradigm Suite installer provides a step-by-step graphical user interface for installing SDE-VS onto your system. Also, it lets you to create shortcuts under Start Menu for quick access to SDE-VS.

1. Double-click on the installer file to launch the setup program.

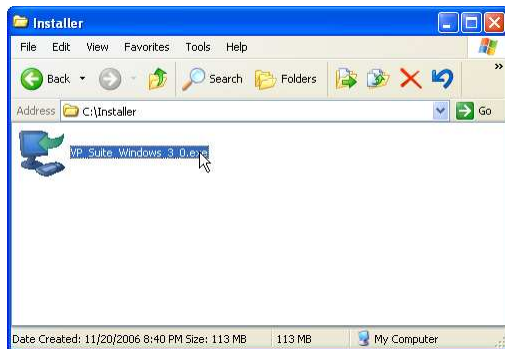


Figure 4 - Running the setup program

2. Click **Next >** to proceed to the License Agreement page.
3. Read through the License Agreement carefully. Make sure you accept the terms before continuing with the installation. If you accept the agreement, select **I accept the agreement** and click **Next >** to proceed to the Select Destination Directory page.

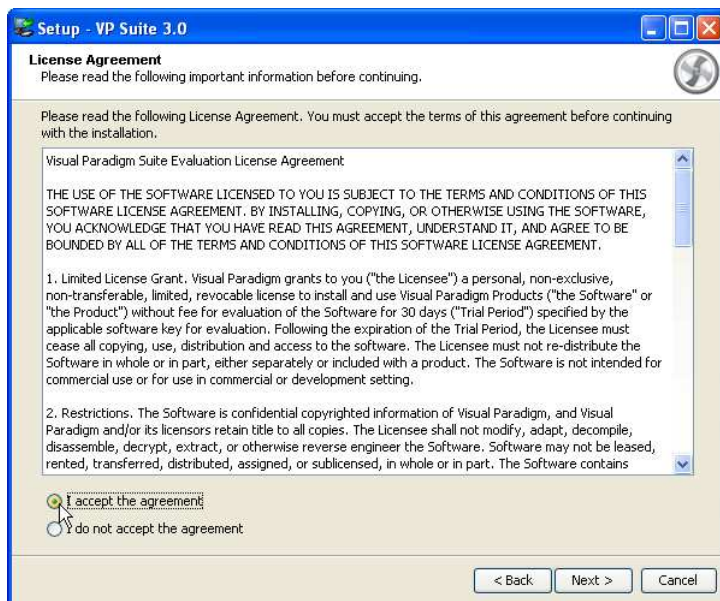


Figure 5 - Accepting the license agreement

4. Specify the directory for installing Visual Paradigm Suite. Click **Next >** to proceed to the next page.
5. Specify the name of the Start Menu folder that will be used to store the shortcuts. Keep **Create shortcuts for all users** checked if you want the shortcut to be available in all the user accounts in the machine. Click **Next >** to proceed.
6. Keep **Visual Paradigm Project (\*.vpp)** and **Visual Paradigm License File (\*.zvpl)** checked if you want your system able to open the project file and the license key file. Click **Next >** to proceed to the product selection page.

### Note



In order to let the system able to open the .vpp file, an installation of standalone product such as VP-UML, DB-VA, BP-VA and Agilian is required.

- 7. Select **SDE for Visual Studio (SDE-VS)**. Click **Next >** to proceed to the product configuration page.



Figure 6 - Selecting SDE-VS for installation

- 8. SDE-VS features vary by product edition. For more details on the features supported by different editions, click the hyperlink **Edition Comparison** which brings you to the web page of SDE-VS feature comparison for different editions. Select the product edition from the **Edition** drop down menu.

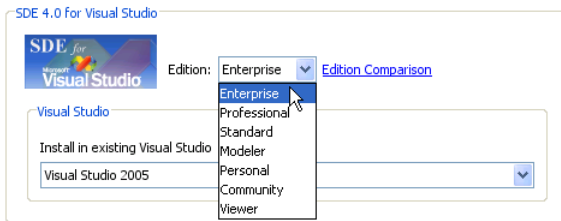


Figure 7 - Selecting the product edition

- 9. Select the version of Visual Studio that you are using.

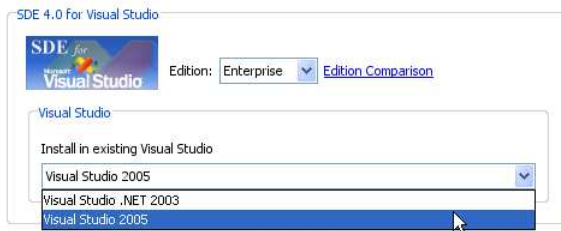


Figure 8 - Selecting the version of Visual Studio

- 10. For users who are going to run SDE-VS with a floating license, selecting **Create Shortcut** for Product Selection will result in creating a shortcut under the Start Menu for starting the Product Selector, a utility that lets you realize the installed products with available keys in the floating license server.

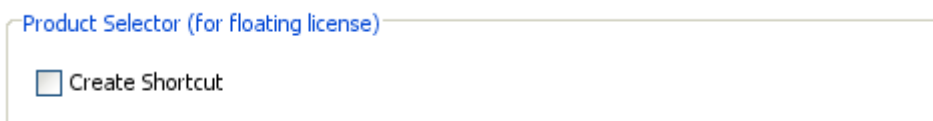


Figure 9 - Section for Product Selector

11. Select **Download Online Help** if you want to be able to access the Help contents from within the tool.



Figure 10 - Selecting the option for downloading online help

12. Select **Download PDF/HTML Version** if you wish to read the documentation in this two types of formats.
13. Press **Next >** to proceed to the license import page.
14. A combined license key is a key file which allows unlocking multiple products. To import a combined license key, select Combined License Key and specify the file path of the key.

A single license key is a key file which allows unlocking only one product. To import a single license key, select Single License Key and specify the file path of the key.

The import of license key is optional at this point, because you can import it when you run SDE-VS. Click **Next >** to proceed with copying files.

#### Note



For evaluation, the key should be sent to your email box (unless you have chosen not to receive it before download). If you have not received the email with key yet, and if you have selected to receive the key as attachment, the email might be treated as spam by mistake. Click on **Request Evaluation Key** to ask for another one. This time, try not to select sending the key as attachment.

15. Upon finishing, you can select whether to start SDE-VS or not. Keep **SDE for Visual Studio 4.0** selected and click **Next >** will run SDE-VS right away. Click **Next >** to finish the installation.

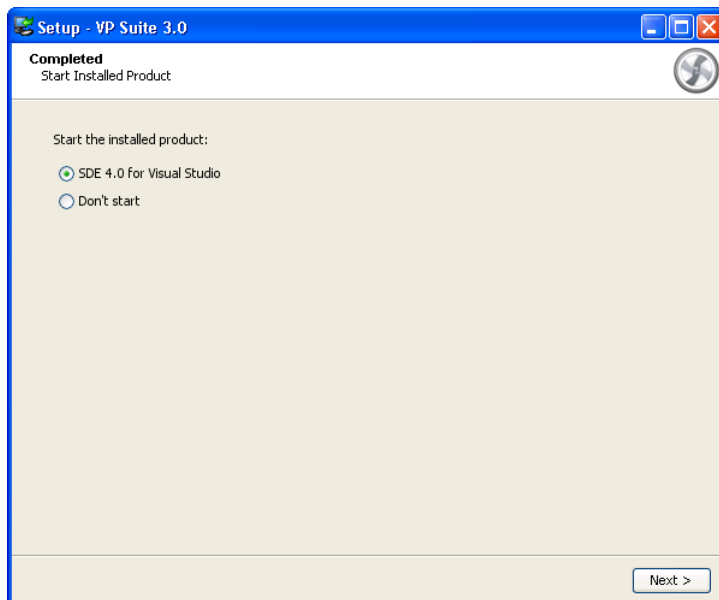


Figure 11 - Finishing the installation and start SDE-VS

16. Click **Finish** to close the setup program.

## Starting SDE-VS

1. Start Visual Studio.



Figure 12 - Attempting to start Visual Studio through the shortcut under the Start Menu

2. Select a .NET project.
3. Select **Tools > Start SDE-VS** from the main menu.

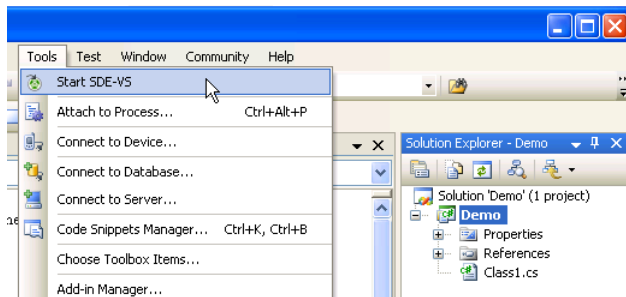


Figure 13 - To start SDE-VS from the main menu

4. If you have imported a valid license key before, SDE-VS should be started now. If not, the **License Key Manager** appears. The License Key manager is a utility for importing a license key. To import a key:
  1. Select **License Keys > Import...** from the menu.
  2. Specify the file path of the key file.
  3. Press **Import** to import the key file.

Click **Close** to close the **License Key Manager** and start SDE-VS. If it prompts you with an invalid license key message, make sure the key you imported does match with the tool that you are running in terms of the following aspects:

- Product (e.g. Smart Development Environment for Visual Studio)
- Version (e.g. Version 4.0)
- Edition (e.g. Enterprise Edition)

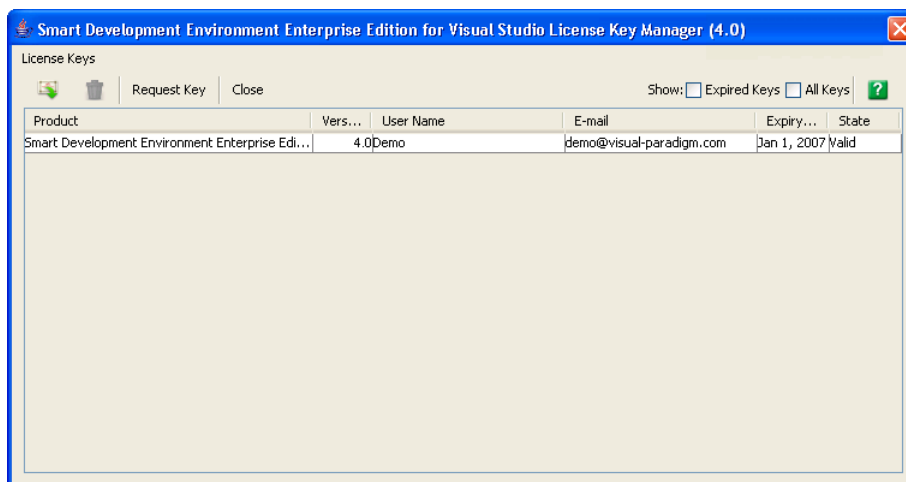


Figure 14 - The License Key Manager

5. The **Project Structure** dialog box appears. Select the path of saving the SDE project and click **OK** to create the project.

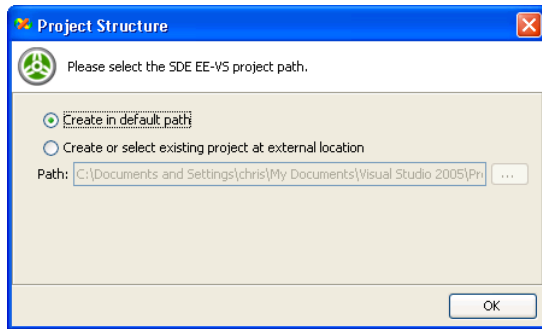


Figure 15 - The Project Structure dialog box

6. Here are the description of each of the possible ways of creating the project:

Ways of creating the SDE project	Description
Create in default path	To create and save the project inside the current Visual Studio solution.
Create or select existing project at external location	To create and save the project to an external location that does not exist before. Alternatively, select an existing project path to link that project to the Java project, which act like importing.

## Uninstalling SDE-VS

Uninstalling SDE-VS will cause SDE-VS to be removed from Visual Paradigm Suite. To uninstall SDE-VS:

1. Close SDE-VS if it is running.
2. Run `%VP-SUITE-INSTALLATION-DIR%/uninstaller/uninstall_sdevs.exe`

## Uninstalling Visual Paradigm Suite

Uninstalling Visual Paradigm Suite will cause the suite together with the products installed from the suite to be removed from the machine. To uninstall Visual Paradigm Suite:

1. Close all the application installed from the suite.
2. Run `%VP-SUITE-INSTALLATION-DIR%/uninstall.exe`